



Features

- Color options: Single color, tunable white, RGB, RGBW and PIXEL.
- Design: Superior design with exquisite craftsmanship ensure stable and reliable performance.
- Flexibility: Side bending, min. bend diameter 60mm[2.36].
- IP grade: Silicone extrusion, molding pressed IP68 protection. Glue process end caps IP67 protection.
- Warranty: 5 years indoor, 3 years outdoor.
- Customization: multiple spec options, can be customized upon requirements

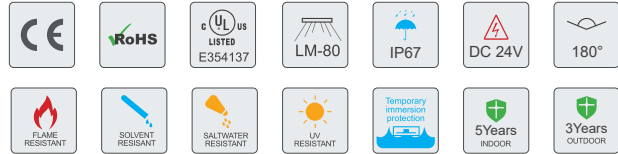


Photo-electric Parameters

Model No.	CRI	Voltage	Beam Angle	Color	Lm/m	Lm/W	Measured Power (W/m)
VNL-S10C-25k	>80	24V DC	180°	2500K	547	53	9.6±10%
VNL-S10C-41k				4100K	552	53	
VNL-S10C-50k				5000K	591	57	
VNL-S10C-65k				6500K	545	52	
VNL-S10C-R		24V DC	180°	Red	231	24	9.6±10%
VNL-S10C-G				Green	438	45	
VNL-S10C-B				Blue	91	9	
VNL-S10C-Y				Yellow	686	80	
VNL-S10C-TW	>80	24V DC	180°	2700K	297	41.4	7.2±10%
				6200K	280	39.4	7.2±10%
				W+N	565	39.5	14.4±10%
VNL-S10C-RGB	/	24V DC	179°	Red	50	10.3	5.76±10%
				Green	126	23.6	5.76±10%
				Blue	27	5.0	5.76±10%
				RGB	202	13.0	17.3±10%
VNL-S10C-RGBW	>80	24V DC	200°	6500K	91	17.3	5.2±10%
	/	24V DC		Red	26	6.2	4.2±10%
				Green	52	11.4	4.5±10%
				Blue	13	2.7	4.8±10%
				RGBW	173	9.4	18.4±10%
VNL-S10C-DIGITAL	/	24V DC	200°	Red	23	3.4	6.6±10%
				Green	47	6.9	6.9±10%
				Blue	11	1.5	6.9±10%
				RGB	77	5.5	14.0±10%
VNL-S10C-DIGITAL-RGBW	>80	24V DC	170°	2000-10000K	124	10.1	5.0±10%
	/	24V DC		Red	27	3.25	5.0±10%
				Green	64	5.4	5.0±10%
				Blue	17	1.4	5.0±10%
				RGBW	98	4.1	15.0±10%

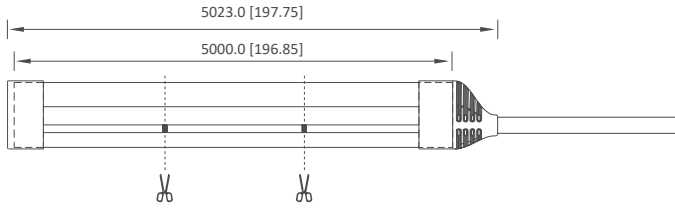
Basic Parameters

Model No.	LED QTY (pcs/m)	Product Size L*W*H (mm)	Min. Cuttable Length (mm)	Working Temperature	Storage Temperature
VNL-S10C	120	15000*10*25	50	-20~+60°C	-20~+70°C
VNL-S10C-TW	240	10000*10*25	50		
VNL-S10C-RGBW	72	5000*10*25	83.3		
VNL-S10C-RGBW	72	5000*10*25	83.3		
VNL-S10C-DIGITAL	60	10000*10*25	100		
VNL-S10C-DIGITAL-RGBW	60	10000*10*25	100		

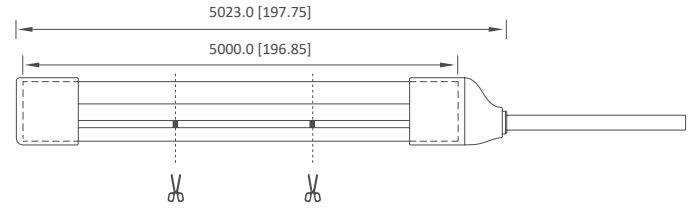
Profile Drawings

Unit:mm [inch]

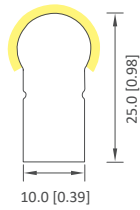
Glue Process (IP67)



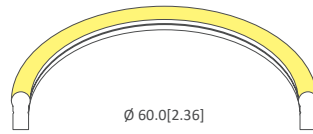
Molding Press Moulded (IP68)



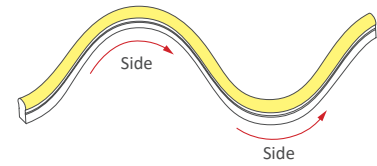
Sectional view



Bending Diameter

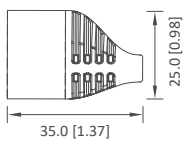


Top Bending

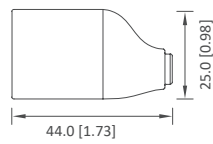


Front cap

Glue Process (IP67)

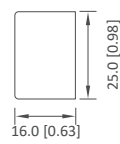


Molding pressed (IP68)

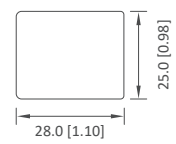


Closing End-cap

Glue Process (IP67)



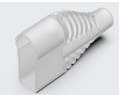
Molding pressed (IP68)



Remarks: "L" is the standard size of the light strip, can be customized according to the multiple of the minimum cutting unit length.

Product accessories

Free



Front cap
VNL-S10C-PCS

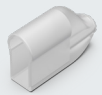
Quantity (m)/pcs: (5/10) 2-4
Dimensions (L*W*H)mm: 45*26*12



Closing End-cap
VNL-S10C-ECS

Quantity (m)/pcs: (5/10) 2-4
Dimensions (L*W*H)mm: 27*16*14

Optional



Front cap
(Molding pressed)
VNL-S10C-PCIIIM

Quantity (m)/pcs: (5/10) 2-4
Dimensions (L*W*H)mm: 44*28*15



Closing End-cap
(Molding pressed)
VNL-S10C-ECIM

Quantity (m)/pcs: (5/10) 2-4
Dimensions (L*W*H)mm: 28*28*15



White Sheathed Cable
VNL-S10C-PCAC

Quantity (m)/pcs: (5/10)
Dimensions (L*W*H)mm: 136



Connector Set
VNL-S10C-D-CCP

Quantity (m)/pcs: (5/10)
Dimensions (L*W*H)mm: 63.80*22.60*13.65



L Connector Set
VNL-S10C-ICL

Quantity (m)/pcs: (5/10)
Dimensions (L*W*H)mm: 30*32*32



Connector Set
VNL-S10C-MCA

Quantity (m)/pcs: (5/10)
Dimensions (L*W*H)mm: 35*15*21



S-type track
VNL-S10C-SP500

Quantity (m)/pcs: (5/10)
Dimensions (L*W*H)mm: 500*11*17



Aluminum track
VNL-S10C--AP35

Quantity (m)/pcs: (5/10)
Dimensions (L*W*H)mm: 25*12.3*17



Aluminum Channel
VNL-S10C-AP1000/3000

Quantity (m)/pcs: (5/10): 1000*12.3*17



Screws

Quantity (m)/pcs:
Dimensions: 10mm



Silicone Glue
VNL-SG45

Quantity (m)/pcs: (5/10) 1
300g/pc